

YG500 Screen Replacement

This Replacing instructions only refer to YG500. The illustrations may differ from your product, please refer to user manual for accurate instructions on how to replace the projector lamp on your model or contact your dealer.

- A Be sure to turn off and unplug the projector , power off for at least 15 minutes before replacing
- B To prevent dust to enter the projector, please use a soft clean cloth to remove surface dust.
- C Make sure the working environment is Dry and Clean.
- D For a safer operation, you should wear an antistatic wrist strap while replacing.
(An antistatic wrist strap is any device that reduces, dampens, or otherwise inhibits electrostatic discharge)

If there is an air gun or other auxiliary tools, please pay attention to whether there is water or water droplets in the nozzle/working environment of the product.

Do not allow any water gets into the projector interior while cleaning or replacing.

If the water drops inside of the projector, it may cause further damage to the product. Once the internal electronic part is exposed to moisture, it is likely to cause a short circuit.

(NOTE: This will avoid warranty and cost will pay)

Projector is a household entertainment electronic product.

Please handle the replaced components according to the requirements of each country for e-waste.

Repair video operation, you can watch link:

#aaotechsupport @aaotechsupport

Replace Guide Manual, go here to download:

www.hiaao.com/download

Spots on a screen could affect the display quality, the usual causes of this are dust and drip particles that have accumulated on a projector's Screen panel.

To solve this issue, usual treatment is to remove the dust / drip particles from the projector Screen Panel,

Dust removal operation of the screen, is necessary to operate in the working state of the whiteboard.

Go here to download the whiteboard (800*480):

www.hiaao.com/download

You only can contact us about the product diagnosis, we will have a professional technical support team to diagnose YG/GM/S series projector.

For spare parts of the product, please contact your dealer or seller directly.

aaO Tech Support

Engineer Xie / Translator Sullivan

Screwdriver



Electrostatic ring



Screen

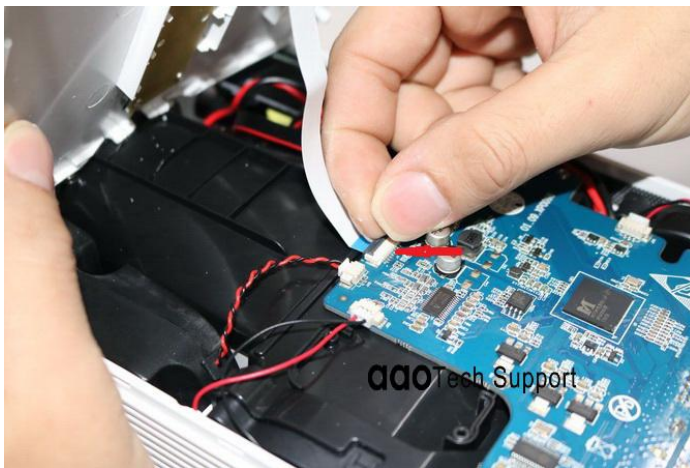


dao Tech

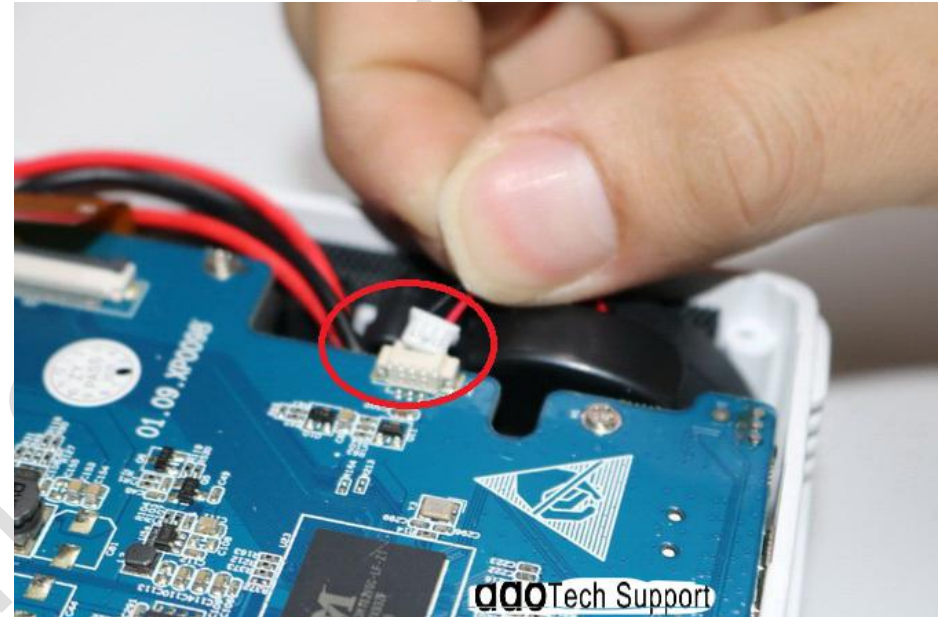
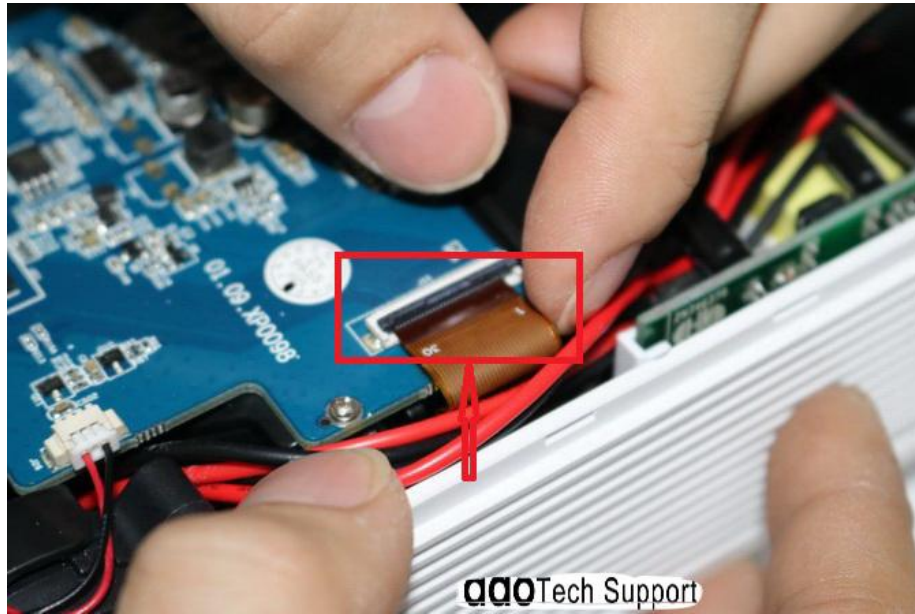
Turn the projector to the bottom, lay it flat, and remove the bottom six screws



With your fingers or tools, gently break off the top cover, turn it over and remove the key alignment (note: when turning up gently, pay attention to the key alignment connected to the cover plate. When opening the cover plate, if excessive force is exerted, the key alignment will be broken).

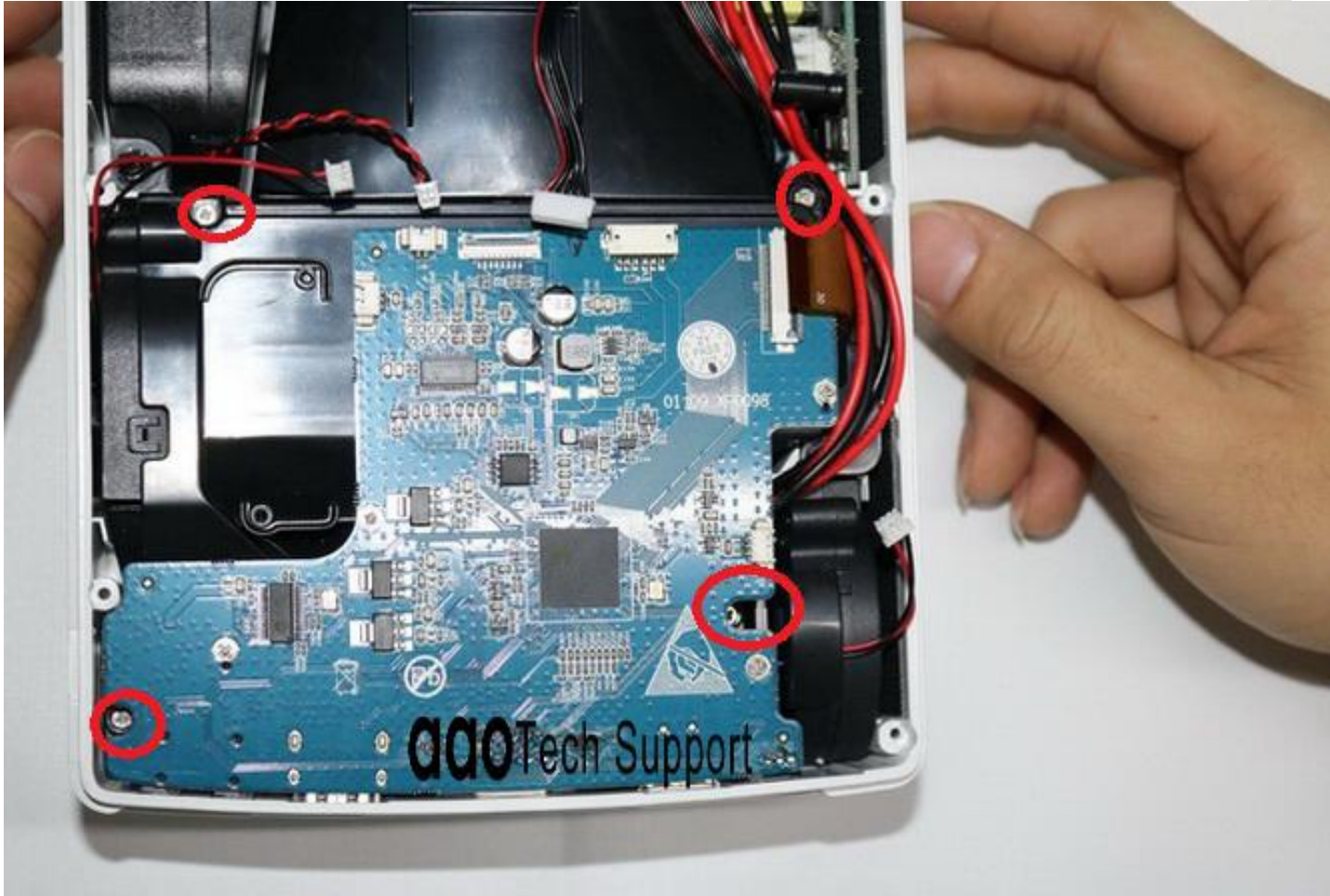


Remove screen wiring and blower power line (note: gently close the wiring cover)

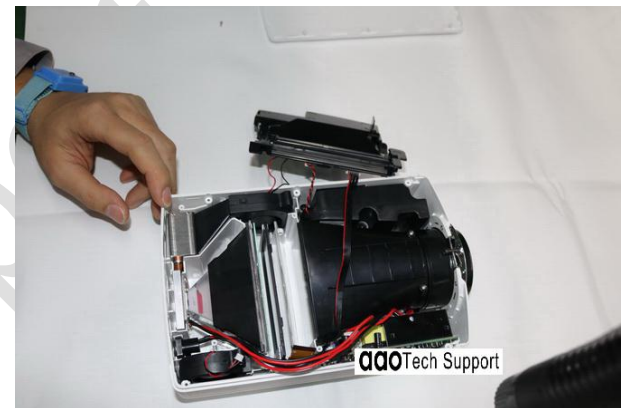


aaoTech

Polish the road cover plate with four screws

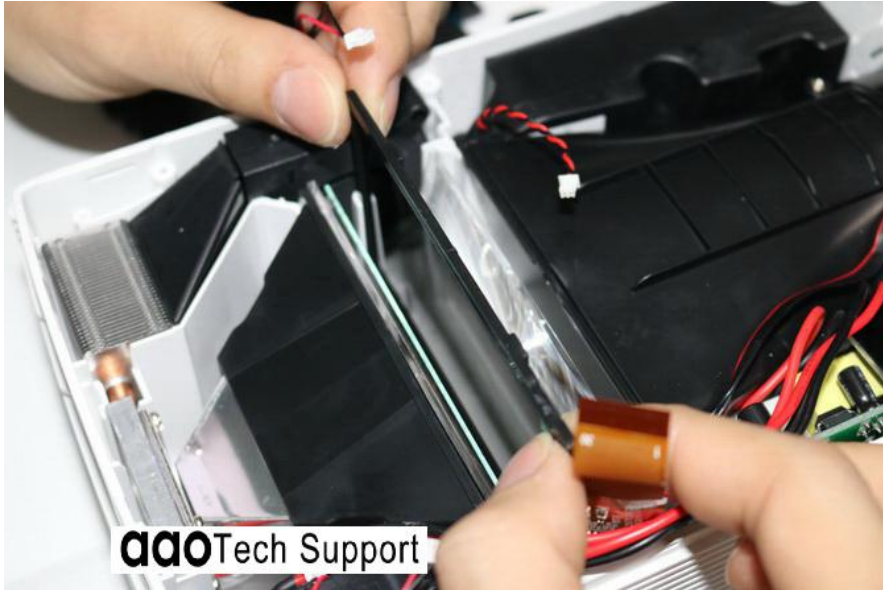


Take out the light cover



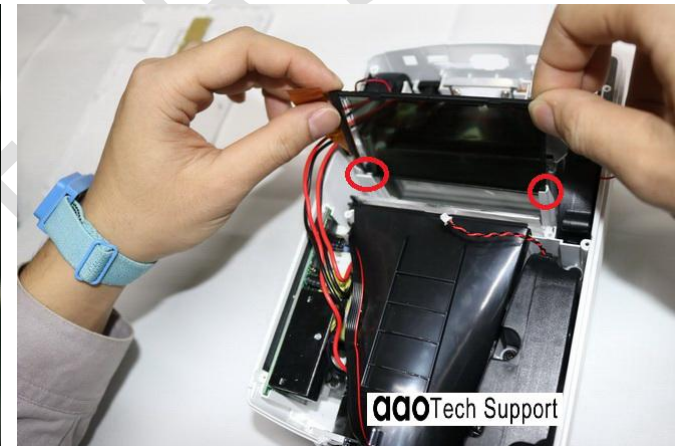
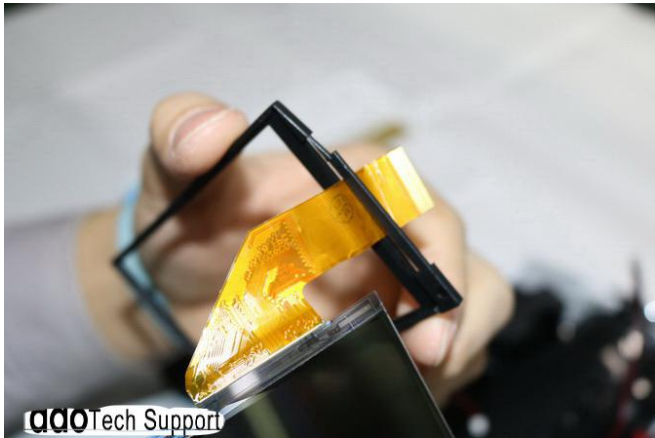
000Tech Support

Remove the screen

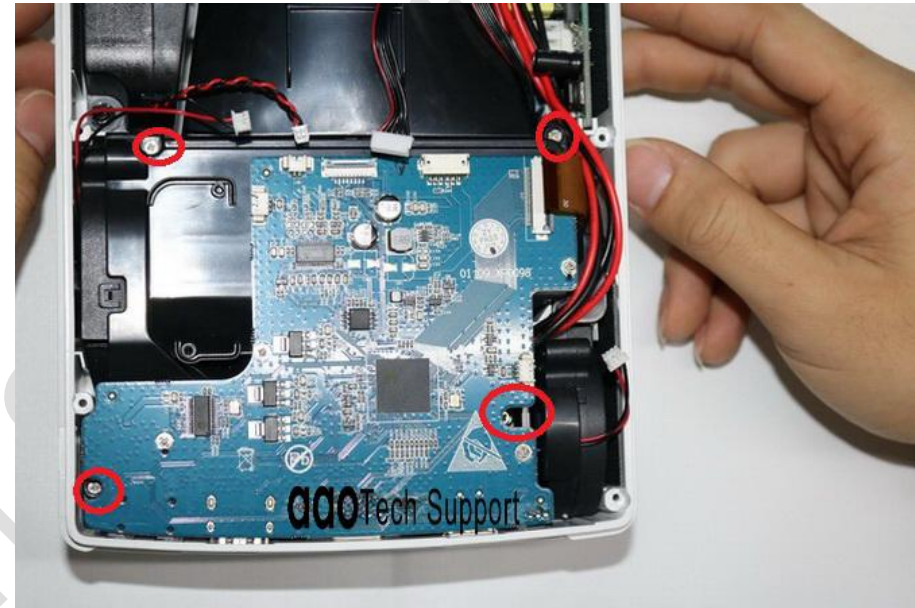


aaoTech

Put back the screen, pay attention to the screen line through the hole (as shown in figure 1), do not leave fingerprints on the screen (as shown in figure 2 gesture);When reloading, the screen faces the light cup in the front and points at the card slot to put it in (as shown in figure 4).

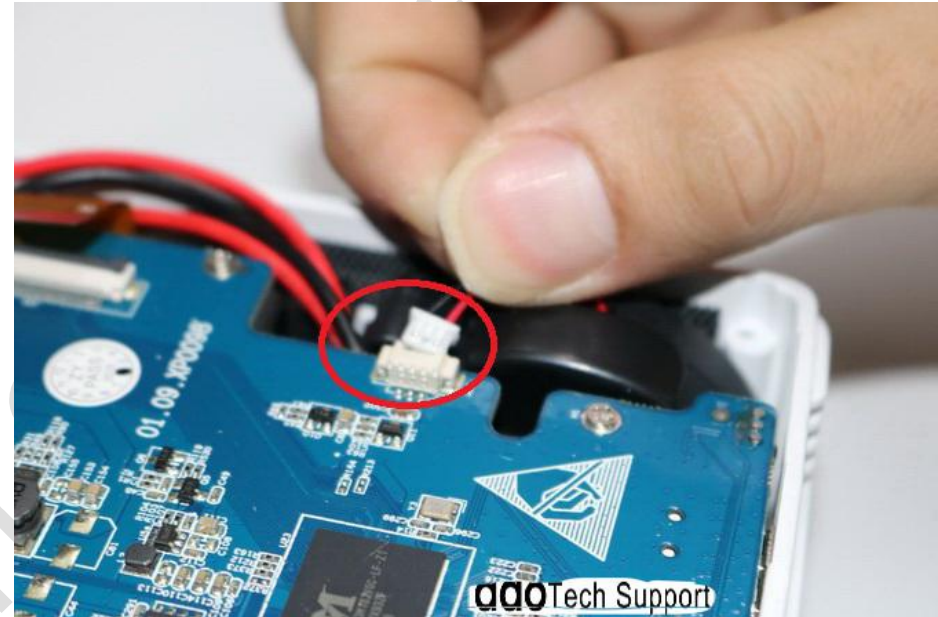
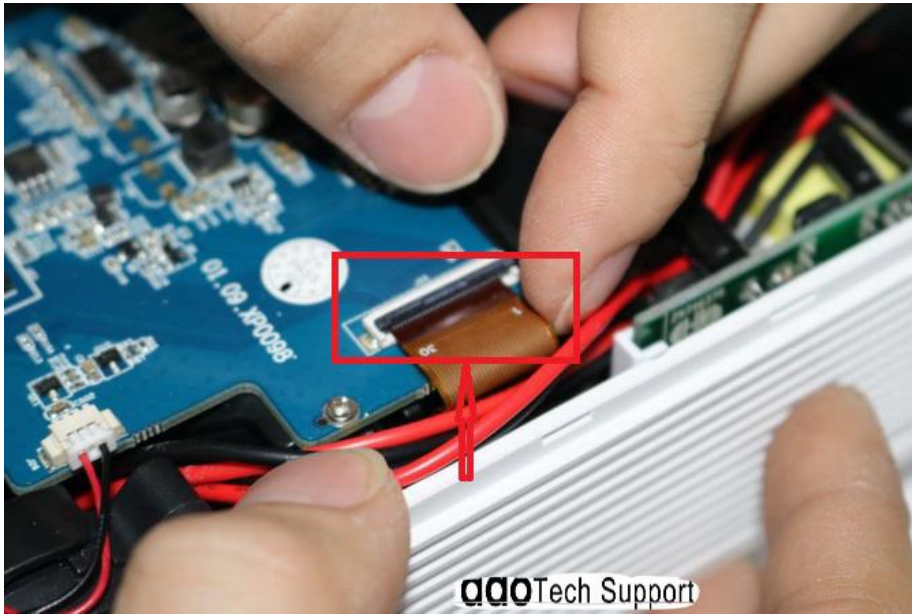


Put back four screws into the cover plate



daoTech

Install the screen layout and plug back the blower power cord

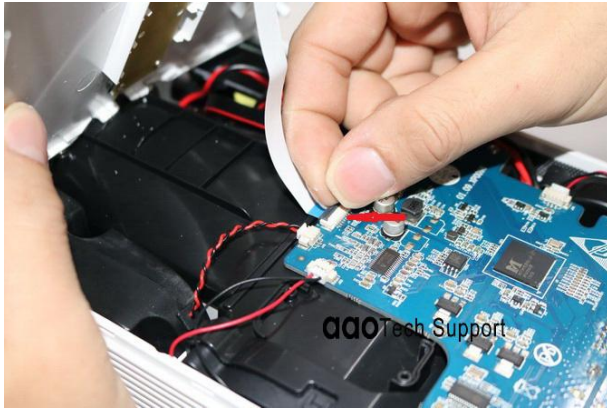


aaoTech

Arrange internal wire rod



Cover back face shell insert back key line



daoTech Support

Return the bottom six screws

